

---

# RED JACKET PREMIER RANGE

---

## The first choice for LPG pumping

### Safe

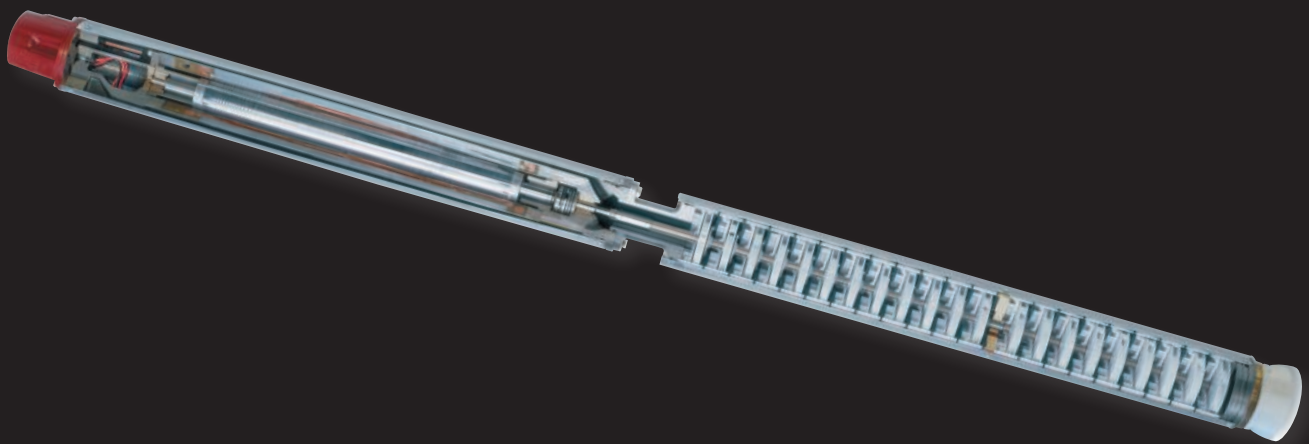
The new Red Jacket Premier range is fully compliant with the latest European harmonised standards.

### Reliable

Red Jacket Premier STPs are now even more durable due to new internal design features.

### Efficient

The Red Jacket Premier range represents the most cost effective and versatile LPG pumping solution available.



# Why Red Jacket Premier?

## The industry leading LPG solution

The Red Jacket LPG Pump is the most efficient, cost-effective explosion-proof submersible pump/motor unit. It has been designed to pump liquefied petroleum gas (LPG) in its liquid state. It provides increased flow rates and operator fuelling uptime with changing LPG mixtures, lower installation and maintenance costs, and lower operating costs than suction technology.

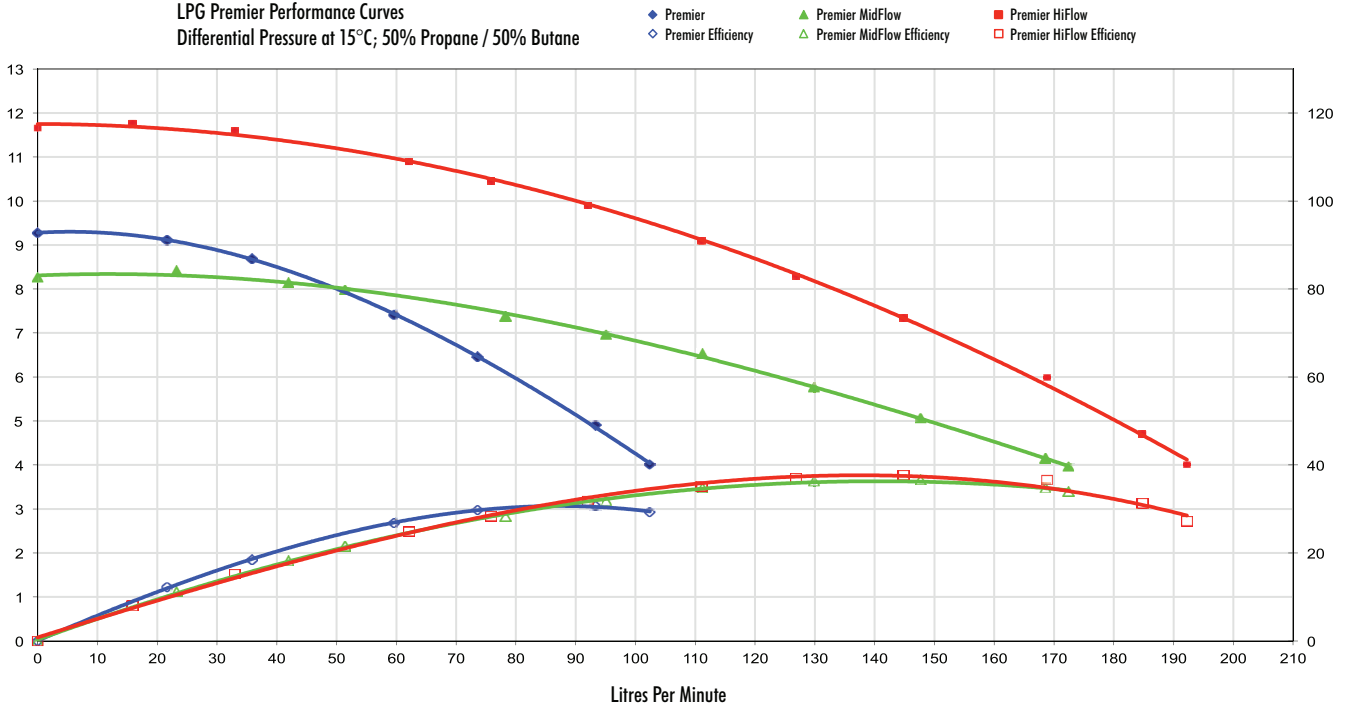
And because they pump butane, propane, or any mixture of the two, these multistage centrifugal pumps supply exceptional performance at peak efficiency. The Red Jacket Premier LPG Pump is designed for all retail, commercial and municipal LPG applications.

## Key benefits

- > **Safety is the priority** – certified EEx ed IIB T3 design explosion-proof submersible electric motor. New materials used in construction have increased the temperature rating to enhance safety characteristics.
- > **Reliability you can depend on** – new design features Internal Thermal Protection and increased area of thrust bearings and seals. The bearing cooling and lubrication system for maximum cooling during dispensing, leads to longer life and lower maintenance.
- > **Cost effective solution** – multistage centrifugal pumping system reduces power consumption compared to many alternatives.
- > **Increased efficiency** – higher flow rate for new MidFlow model; reduced power consumption for new HiFlow model.
- > **Simplified installation and maintenance** – the split pump/motor design allows easy installation and service. New and previous Premier pumps are dimensionally identical, so new models can be used as a direct replacement for existing old models.

| Advantages of Pressure vs. Suction Technology | Red Jacket Premier    | Suction Systems            |
|---|-----------------------|----------------------------|
| Installation                                  | 1x3 HP Red Jacket STP | 2 x 5 HP suction pumps     |
| Service                                       | Low maintenance       | High maintenance           |
| Mechanical seals                              | None                  | Replace every 5 years avg. |
| Operation                                     | Quiet                 | High noise level           |
| Life expectancy                               | 11 to 18+ years       | 10 to 12 years             |

LPG Premier Performance Curves  
Differential Pressure at 15°C; 50% Propane / 50% Butane



# Technical Specifications

## Red Jacket Premier Submersible Turbine Pumps for LPG

| Final Assemblies   | Model  | Part Number   |
|--|--|---|
| Premier  | LPG300V17-21   | 410115-001  |
| Premier MidFlow  | LPG300V17-17   | 410115-003  |
| Premier HiFlow   | LPG500V17-24   | 410115-002  |
| Performance Specifications   |  |   |
| Rated flow rate  | Premier:   | 66 LPM @ 7Bar $\Delta$ P - 104 LPM @ 4Bar $\Delta$ P  |
|  | Premier MidFlow:   | 95 LPM @ 7Bar $\Delta$ P - 174 LPM @ 4Bar $\Delta$ P  |
|  | Premier HiFlow:  | 152 LPM @ 7Bar $\Delta$ P - 195 LPM @ 4Bar $\Delta$ P |
| Shut off pressure  | Tank pressure (depending on liquid mixture)  |   |
| Minimum pressure   | 4Bar $\Delta$ P  |   |
| Pump Unit Specifications   |  |   |
| Pump type  | Multi stage centrifugal - Ex II 1 G IIA c (DEMKO 13 ATEX 1303849U)                               |   |
| Pump diameter  | 4 inch (102 mm)  |   |
| Bearing type   | Carbon Bearings  |   |
| Outer shell  | Stainless steel  |   |
| Discharge head   | Cast iron  |   |
| Impeller material  | "Polyetherimide" (PEI) resin thermoplastic   |   |
| No. of stages  | 21 (Premier)   |   |
|  | 17 (Premier MidFlow)   |   |
|  | 24 (Premier HiFlow)  |   |
| Motor Unit Specifications  |  |   |
| Motor type   | 3 HP 2.2 KW or 5 HP 3.7 KW – Ex II 2 G   |   |
| Rating and speed   | Class "B" 3000 RPM   |   |
| Bearing type   | Axial and radial carbon bearings   |   |
| Motor shaft material   | Stainless steel  |   |
| Outer shell material   | Stainless steel  |   |
| Type of protection   | Insulation class is B (130 °C) – Ex d IIA Gb (DEMKO 13 ATEX 9483031U & IECEx UL 13.0034U)        |   |
| Installation Requirements  |  |   |
| Electrical supply  | 3 phase, 380 - 415 V AC $\pm$ 10% 50 Hertz $\pm$ 5%  |   |
| Required NPSH (Net Positive Suction Head)                                      | 127 mm above pump inlet  |   |
| Installation method options  | In a pump chamber manifold or direct in the storage tank   |   |
| Manifold type  | In accordance with Red Jacket specifications as listed in: "Design and Regulations LPG Manifold" |   |
| Minimum bottom clearance (direct installation)                                 | 125mm (5 inches)   |   |
| External by-pass   | No additional external by-pass required  |   |
| Dry-run / low pressure control unit  | To be locally supplied by Distributor / Installer  |   |
| ATEX Certification   |  |   |
| Final assemblies   | Ⓔ II 2 G Ex b c d IIA T4 Gb (DEMKO 13 ATEX 9990794X)   |   |
| Pump units   | Ⓔ II 1 G IIA c (DEMKO 13 ATEX 1303849U)  |   |
| Motor units  | Ⓔ II 2 G Ex d IIA Gb (DEMKO 13 ATEX 9483031U & IECEx UL 13.0034U)                                |   |
| Special conditions for safe use  | See manuals 051-327 and 577014-063   |   |
| Field replacements of previous Premier models                                  |  |   |
| New Premier models can be used as a direct replacement for existing old models |  |   |
| New model pumps and motors should not be mixed with old pumps or motors        |  |   |

# Gilbarco Veeder-Root Solutions

With a universal range, global reach, deep-rooted expertise and superior customer service, Gilbarco Veeder-Root is committed to building better business for its customers.

## Wetstock Management

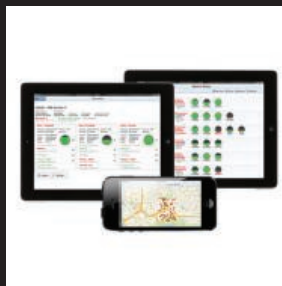
**Improve performance, uptime and security**

Our comprehensive range of compliant and reliable Wetstock Management solutions offer you advanced engineering and a responsive service. Scalable and customisable, our tools provide control, security and data across networks of all sizes anywhere in the world.

Ultimately, our solutions enable you to stay compliant and in control.

Our range includes:

- > Automatic Tank Gauging
- > Submersible Turbine Pumps
- > Remote Monitoring - Insite360



## Business Support

**Protect assets and drive operational efficiency**

Our Business Support solutions minimise downtime and disruption by providing the tools, services and technology necessary for our customers to get more from their businesses.

With an extensive reach throughout Europe, you can be assured that no matter where your business takes you, our comprehensive range of services will always be available.

## Pumps & Dispensers

**Robust, reliable, accurate and secure technology**

Our Pumps & Dispensers feature flexible, innovative and upgradable technology. They not only grow with your business, but also improve the forecourt experience for your end-users.

By focusing on the unique requirements of our customers, we deliver high quality and reliable solutions that are designed to support better business now and in the future.

## Retail Solutions

**Maximise profitability and minimise overheads**

Our leading Point of Sale (POS), Head Office Systems (HOS), Back Office Systems (BOS) and forecourt controllers create new business at the pump and enable deeper insights into stock, logistics and security.

Working alongside our wide range of products and services, our Retail Solutions are designed to work for you.